

Aluminium rolling grilles – stylish protection for your property





Ideal solution for shops and boutiques,
shopping malls and stores,
offices and banks,
café and restaurants,
underground garages and parking



Aluminium rolling grilles

ALUTECH aluminium rolling grilles



Safety

The ease in which a rolling grille can be operated allows quick opening to evacuate the people in case of emergency. This is their undeniable advantage when compared to fixed grilles.



Conformity to standards

ALUTECH rolling grilles conform to the quality and security requirements of the European standard EN 13659 (confirmed by the TÜV-certificate).



High level of burglar resistance

ALUTECH rolling grilles are certified to classes RC2 and RC3 of burglar resistance according to EN1627.



24 hours visibility of shop-front windows

Shop-front windows are visible, even when the shops are closed, offering the opportunity to potential customers of seeing the goods on display 24/7.



Lightweight and durable

Compared to grilles made from steel, aluminium rolling grilles are resistant to corrosion, rain and fluctuations in temperature. They are solid and secure, environmentally friendly and lightweight.



Design

The stylish appearance of the rolling grilles harmoniously suits any building architecture, the interior of modern shopping malls, supermarkets and small shops.



Aluminium rolling grilles

AEG56 rolling grilles

Rolling grilles are made from extruded aluminium profiles.
Max. grille dimensions: width — 4,5 m, area — 13,5m²

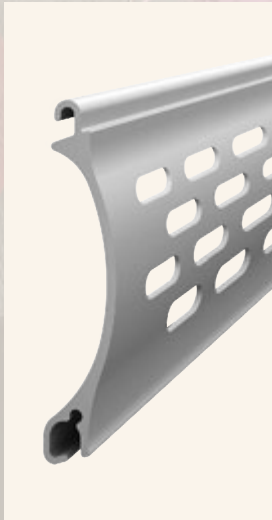
AEG56

grille-work
profile



AEG56/P

perforated
profile



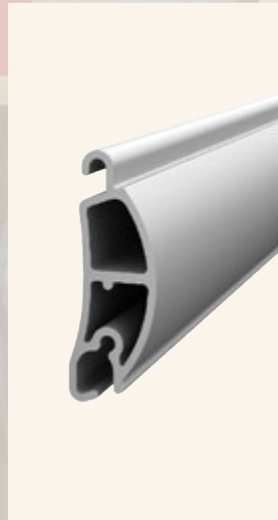
AER56

single-skin
profile



AEG30/S

reinforcer
profile



- High anti-burglar protection: AEG56 rolling grilles conform to resistance class RC2 according to EN1627; AEG56/P rolling grilles – resistance class RC3 according to EN1627.
- Protection against unauthorised lifting of the grille while in its down position is provided by a special retainer profile.
- Light transmission of AEG56 grille – up to 42%, AEG56/P – up to 29%.
- Grille-work, reinforcer and single-skin profiles may be used in combination.
- Micro perforation of AEG56/P rolling grille prevents damage to the glazed shop-front windows and penetration of foreign objects inside.

AEG84 rolling grilles

Rolling grilles are made from extruded aluminium profiles.
Max. grille dimensions: width — 7,0 m, area — 21,0 m²

AEG84

grille-work
profile



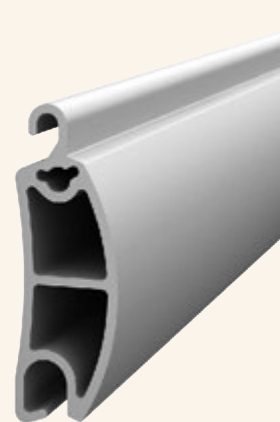
AER84

single-skin
profile



AEG45/S

reinforcer
profile



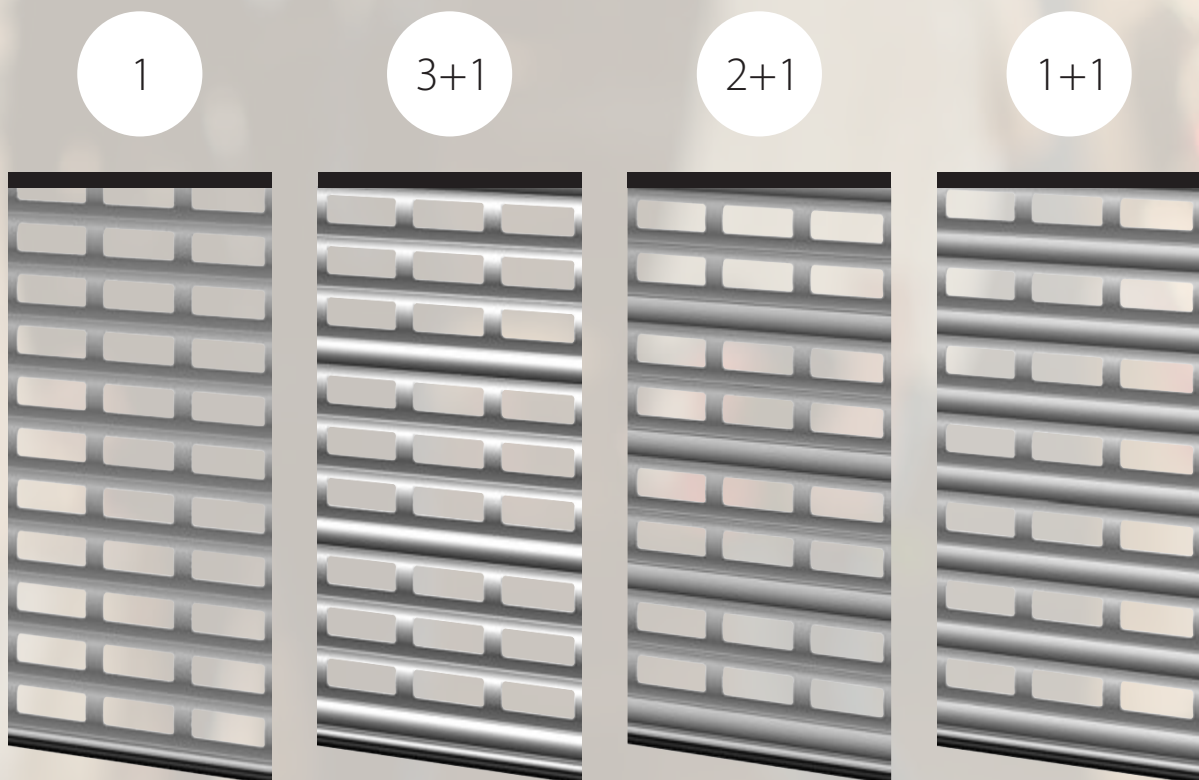
- High anti-burglar protection.
- Light transmission of AEG84 grille — up to 47%.
- Max. light transmission of the AEG84 grille in comparison to the AEG56 and AEG56/P rolling grilles - up to 47%.
- Protection against unauthorised lifting of the grille while in its down position is provided by a special retainer profile.
- Grille-work, reinforcer and single-skin profiles may be used in combination.



Aluminium rolling grilles



Variants of profile combination



Combinations for the AEG56 grille	Max. opening width, m				Max. opening area, m ²
	3,0	3,5	4,0	4,5	
AEG56	+				7,5
3 AEG56 + 1 AEG30/S	+	+			10,5
2 AEG56 + 1 AEG30/S	+	+	+		12,0
1 AEG56 + 1 AEG30/S	+	+	+	+	13,5

Combinations for the AEG84 grille	Max. opening width, m				Max. opening area, m ²
	5,5	6,0	6,5	7,0	
AEG84	+				16,5
3 AEG84 + 1 AEG45/S	+	+			18,0
2 AEG84 + 1 AEG45/S	+	+	+		19,5
1 AEG84 + 1 AEG45/S	+	+	+	+	21,0

BO
HUGO

4

1

2



Aluminium rolling grilles

More security

Automatic operation provides the most convenient control of rolling grilles – just press the remote control button or use the switch to open/close the grille. For your comfort and security, the reliability and safety of the grille in daily operation is ensured by safety devices.

1

Safety brake

A safety brake prevents dropping of the curtain in case of electric motor failure.

2

Safety edge system

If an obstruction is detected in the opening, and it contacts with the edge of the grille curtain, the curtain is stopped.

3

Hand operation for emergency opening

This allows manual opening of the grille in case of emergency, like a power or electric motor failure.

4

Movable carriages

Prolong the operating life of rolling grilles by ensuring smooth and secure movement of the curtain along the guide rails, which reduces the load on the motor and suspension system.

Wide colour range of AEG56 and AEG84 rolling grilles — 19 gloss colours, 6 shagreen colours, 3 colours of anodized coating



The ALUTECH Group of companies is one of the leading European manufacturers of profiles and components for roller shutter systems, aluminium profile systems and sectional doors. The ALUTECH Group of companies unites 7 manufacturing enterprises and more than 25 sales companies in Russia, Belarus, Ukraine, Germany and the Czech Republic. ALUTECH products are represented in more than 40 countries around the world, such as the USA, Germany, Great Britain, France, Belgium, the Netherlands, the Czech Republic and Poland.

